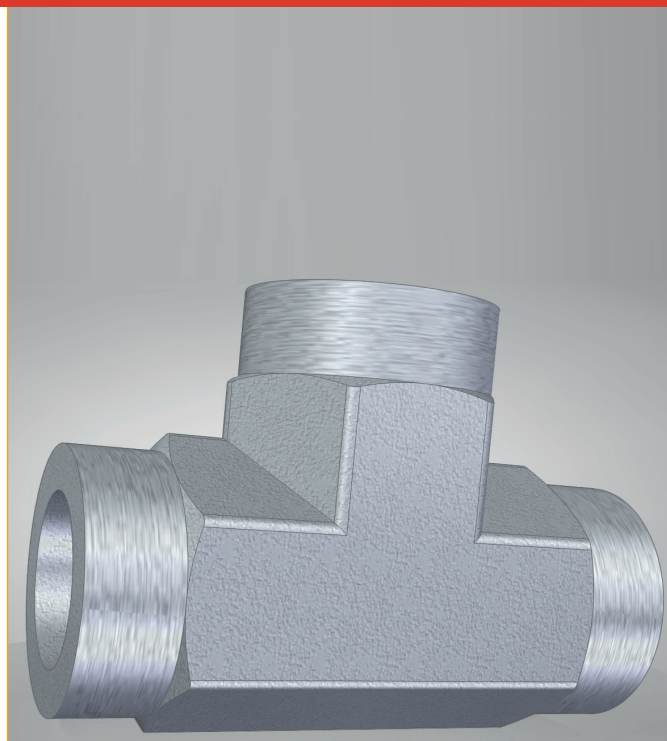


INDIRECT LOW PRESSURE HOSE FITTINGS AND NOZZLES

Designed for use with
ILP Automatic
Suppression Unit

DESCRIPTION

Firetrace offer several adaptors that can be used to mate the discharge connections on Indirect systems. All fittings are NPT or JIC connections and are Zinc plated Steel with a minimum burst rating of 3,000 PSI.



SMALL ILP 3/8" HOSE FITTINGS

PART NUMBER	NAME	DESCRIPTION
850016	Fitting - Hose to 1/4" Valve	3/8" Male-to-Male
850017	Fitting - Hose to Hose Union	3/8" Male-to-Male
850018	Fitting - Hose to Hose Elbow	3/8" Male-to-Male
850019	Fitting - Hose to Hose Tee	3/8" Male-to-Male-to-Male
850020	Fitting - Hose to 1/4" Nozzle Bulkhead	3/8" Male-to-Male
850021	Fitting - Hose to 1/4" Nozzle Elbow Bulkhead	3/8" Male-to-Male

MEDIUM AND LARGE 1/2" HOSE FITTINGS

PART NUMBER	NAME	DESCRIPTION
850022	Fitting - Hose to 1/2" Valve	1/2" Male-to-Male
850023	Fitting - Hose to Hose Union	1/2" Male-to-Male
850024	Fitting - Hose to Hose Elbow	1/2" Male-to-Male
850025	Fitting - Hose to Hose Tee	1/2" Male-to-Male-to-Male
850026	Fitting - Hose to 1/2" Nozzle Bulkhead	1/2" Male-to-Male
850027	Fitting - Hose to 1/2" Nozzle Elbow Bulkhead	1/2" Male-to-Male
201134	P-Clip for 1/2" Hose	Metal P-Clip with Rubber Chafing Protection -Pack of 6

NOZZLES FOR ILP SYSTEMS

PART NUMBER	NAME	DESCRIPTION
500001	Small Dry Chemical Nozzle (FM/UL)	All Small Dry Chemical ILP Systems
500002	Medium Dry Chemical Nozzle (FM/UL)	All Medium, Large and X-Large Dry Chemical ILP Systems
500015	Cross Pattern Nozzle – For 5/16" Copper	Small ILP - Clean Agent (FM-200 and Novec 1230) (FM/UL)
500017	Medium Cross Pattern Nozzle – 1/2" NPT	All Medium/ Large Clean Agent ILP - (FM-200 and Novec 1230) (FM/UL)
500023	Class D Nozzle w/ Comp. Fitting	All Dry Chemical ILP Systems (Super D and Class D - Li)
500092	Foam Nozzles For 5/16" Copper	All Firetrace Foam Systems
510017	Small Nozzle Cap - No Lanyard	Fits Small ILP Nozzles
510018	Medium Nozzle Cap - No Lanyard	Fits ILP Medium Nozzles
510019	Medium Blow-Off Cap with Lanyard – RED	Fits ILP Medium Nozzles RED COLOR